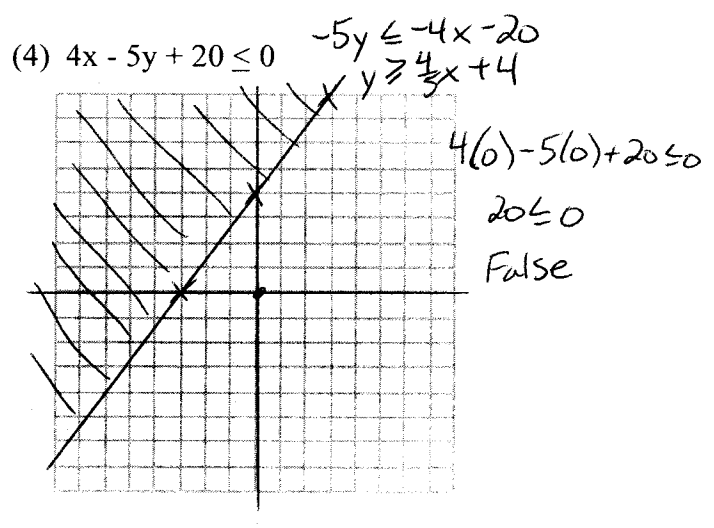
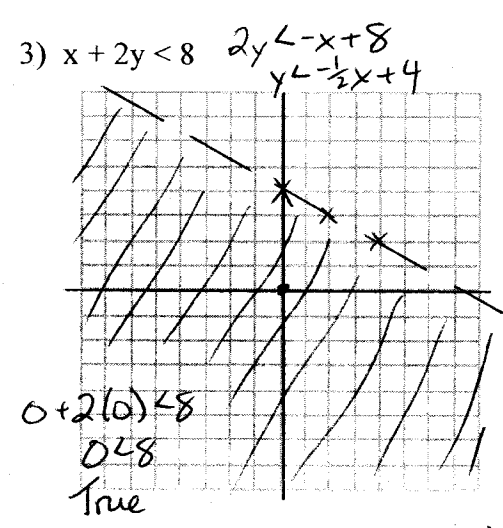
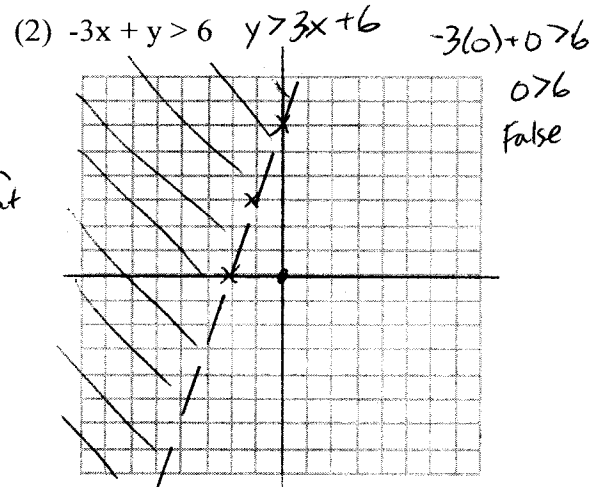
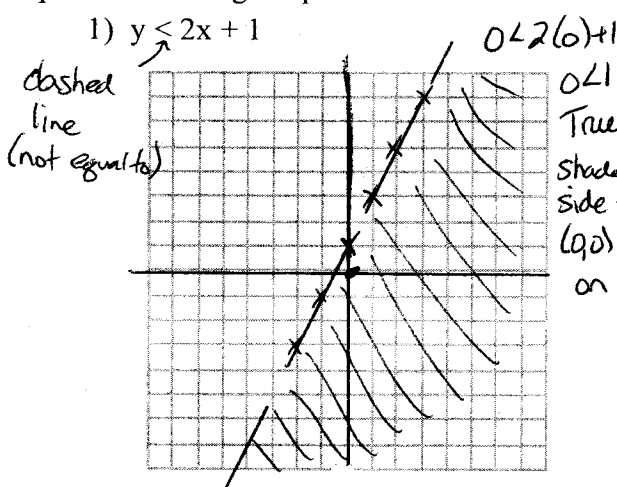


## Lesson 4: Graphing a Linear Inequality in Two Variables

To graph linear inequalities by hand:

- 1) Substitute the inequality sign with an equal sign and graph.
- 2) If the sign is  $\geq$  or  $\leq$  the line is solid and if the sign is  $<$  or  $>$  it is a broken line.
- 3) Use a test point and see if the **inequality** is true. If yes, shade on that side. This is the solution of the inequality.

Graph the following inequalities:



### Discrete vs Continuous Variables

Discrete variables are those that have no decimal while continuous variables have decimals. For example, the number of trees planted is a discrete variable because we can't plant part of a tree. The number of gallons of gas in a car is a continuous variable because we can have part of a gallon. The graphs of these will be a series of dots as opposed to shaded.